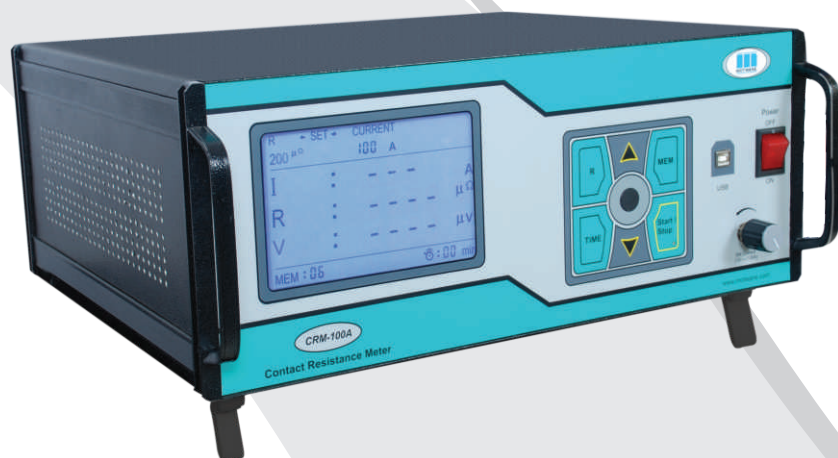


Features

- High resolution and accuracy
- Continuously adjustable direct current
- Real time display current and resistance
- Data management software
- Built-in Memory of 99 test result



CRM-100A

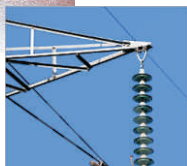
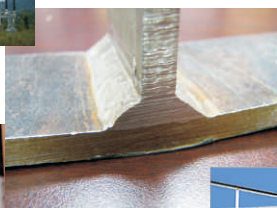
Contact Resistance Meter

The Motwane make Contact Resistance Meter-CRM-100A is a digital micro ohmmeter, designed to measure extremely low resistances. The Instrument is based on the proven 4-wire measurement method for low resistances to eliminate the effect of lead resistance of 2 wires method. The instrument is designed to replace complex bridge set up with a single compact unit. The D.C current injection is continuously adjustable between 10A to 100A. The testing information is displayed on large LCD with backlit, real time data is displayed during the test ON condition. The instrument gives a high resolution of 0.01 $\mu\Omega$ on 200 $\mu\Omega$ resistance range. The instrument is easy to operate and user friendly. Accessories are rugged and come with heavy duty clips for better grip on test object. The kit and accessories are housed in a trolley mounted casing for easy transportation. Advanced Dot Net based software is provided for data downloading, analysis and report generation. The instrument can be operated through software from a remote location. Internal memory is provided for onsite data storage

Applications

CRM-100A has a large application for direct and indirect measurements in various industries and manufacturing facilities. High accuracy makes it a reliable tool for Quality Assurance and easy operation makes it a very handy tool for quick maintenance checks for process industries. Typical resistance measurement applications are:

- Circuit Breaker contact resistance
- Electrode resistance measurement
- Bus bar joints
- Isolator contacts
- Cable drum resistance measurement
- Cable splice
- Weld joints
- Bond resistance



CRM-100A General Specification

Principle	: 4 wire measurement
Display	: Large LCD; 4½ digit display for resistance; 3½ digit display for current
Keypad	: Heavy duty sealed soft touch membrane keypad
Test ON indication	: LED and Beep
Over range indication	: Blinking OL display
Mains ON indication	: Mains power ON indicator

Environmental Specifications.

Operating Temperature	: 0°C to 55°C
Storage Temperature	: -10°C to 55°C
Humidity	: < 90% RH, Non condensing

Physical Specifications

Dimensions (D x W x H)	: 365mm x 426mm x 177.8mm
Net Weight	: Instrument: 12 Kg
Test Cables	: 5.3 Kg
Packing case	: 9.5Kg
Gross Weight	: 26.8 Kg approx.

Technical Specification

Power Supply

Input power	: 230V ± 10%, 50Hz, 1Ø
-------------	------------------------

Test Specification

Current Injection	: 10A-100A DC in step of 0.1A
Open-Circuit Voltage	: 5V DC
Output power	: 500VA

Resistance Measurements

Resistance ranges	200μΩ	2mΩ	20mΩ
Resolution	0.01μΩ	0.1μΩ	1μΩ
Accuracy	For 21 Amp to 50 Amp : ±(1.0%+5 digits)		
	For 51 Amp to 100Amp : ±(0.5 %+5 digits) for all resistance		

Operation Time

Up to 50A, there is no time limit for continuous Operation.
From 50A to 100A, 4 minutes-ON and 10 minutes-OFF

Accessories

Standard Accessories

Set of testing leads (10m)	: 1 Set (4Nos)
Mains power cord	: 1 No.
User Manual	: 1 No.
Calibration Sheet	: 1 No.
Carrying Case	: 1 No.

Optional Accessories

Software CD	: 1 No.
USB Cord	: 1 No.



Notes

* The specifications mentioned herewith in are standard, for detailed specification please refer to G.T.P., if any. ■ Windows "Vista/Xp/2000 is a registered trade mark of Microsoft © Corporation